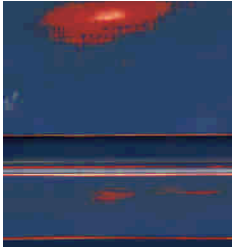
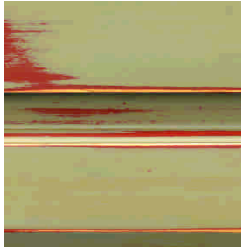


## Tips on Painting and Glazing from General Finishes

- It is not necessary to put a Top Coat over a glaze.
- Using a Top Coat over a glaze will offer more protection and produce a finish like that of fine furniture. Using a Top Coat after sanding thru a finish will help hide the tiny scratches that are made and offer protection to the exposed wood.
- When glazing over a paint, it is not necessary to sand thru the paint to expose the wood. Glazing can be done right over the paint.
- Remember that the glaze will lodge itself into any little crack or dimple in the surface so if you wish to have the glaze in the cracks and recesses and not so much on the flat surfaces, we recommend 1 or 2 coats of Top Coat prior to applying the glaze.



1. Two coats of Brick Red MP
2. One coat of Top Coat to prevent color blending
3. Two coats of Federal Blue MP sanded through
4. Yellow Ochre Glaze
5. Optional Top Coat



1. Two coats of Brick Red MP
2. One coat of Top Coat to prevent color blending
3. Two coats of Basil MP sanded through
4. Yellow Ochre Glaze
5. Optional Top Coat



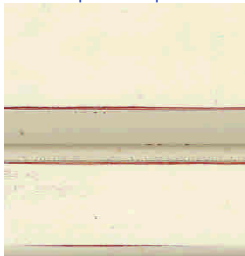
1. Two coats of Red Pepper MP
2. One coat of Top Coat to prevent color blending
3. Two coats of Lamp Black MP sanded through
4. Optional Top Coat



1. Two coats of Lamp Black MP
2. One coat of Top Coat to prevent color blending
3. Two coats of Red Pepper MP sanded through
4. Optional Top Coat



1. Two coats of Antique White MP sanded through
2. Burnt Umber Glaze
3. Optional Top Coat



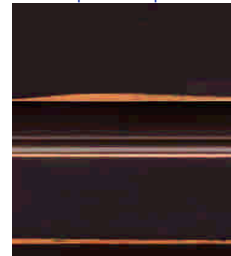
1. Two coats of Brick Red MP
2. One coat of Top Coat to prevent color blending
3. Two coats of Antique White MP sanded through
4. Optional Top Coat



1. Two coats of Brick Red MP
2. One coat of Top Coat to prevent color blending
3. Two coats of Antique White MP sanded through
4. Van Dyke Brown Glaze
5. Optional Top Coat



1. Two coats of Brick Red MP
2. One coat of Top Coat to prevent color blending
3. Two coats of Linen MP sanded through
4. Red Sienna Glaze
5. Optional Top Coat



1. Two coats of Lamp Black MP sanded through
2. Red Sienna Glaze
3. Optional Top Coat



1. Two coats of Lamp Black MP
2. One coat of Top Coat to prevent color blending
3. Two coats of Snow White MP sanded through
4. Optional Top Coat



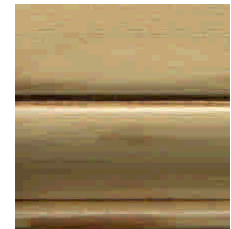
1. Two coats of Brick Red MP
2. Van Dyke Brown Glaze
3. Optional Top Coat



1. Two coats of Basil Milk Paint
2. Van Dyke Brown Glaze
3. Optional Top Coat



1. Two coats of Snow White MP
2. Van Dyke Brown Glaze
3. Optional Top Coat



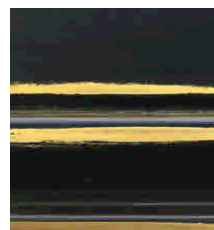
1. Two coats of Millstone MP sanded through
2. Van Dyke Brown Glaze
3. Optional Top Coat



1. Two coats Brick Red
2. One coat of Top Coat to prevent color blending
3. Two coats of Millstone MP sanded through
4. Optional Top Coat



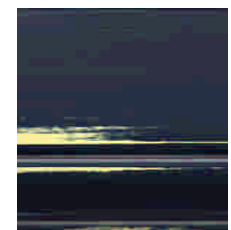
1. Two coats of Brick Red
2. One coat of Top Coat to prevent color blending
3. Two coats of Millstone MP sanded through
4. Yellow Ochre Glaze
5. Optional Top Coat



1. Two coats of Buttermilk MP
2. Two coats Lamp Black MP sanded through
3. Yellow Ochre Glaze
4. Optional Top Coat



1. Two coats of Coastal Blue MP
2. One coat of Top Coat to prevent color blending
3. Two coats of Sierra Gold MP sanded through
4. Optional Top Coat



1. Two coats of Butter Milk MP
2. One coat of Top Coat to prevent color blending
3. Two coats of Coastal Blue MP sanded through
4. Optional Top Coat



1. Two coats of Coastal Blue MP
2. One coat of Top Coat to prevent color blending
3. Two coats of Linen MP sanded through
4. Optional Top Coat